



GOVERNMENT OFFICES
FOR THE ENGLISH REGIONS



INVESTOR IN PEOPLE

POSITIVE ACTION
DISABLED PEOPLE





GOVERNMENT OFFICE
FOR THE NORTH EAST

Carol Ashworth

Sustainable Schools Policy Lead

Welcome from Government Offices for the North East and Yorkshire & The Humber

- **The Government Offices' role brings together the interests of 12 Whitehall Departments:**

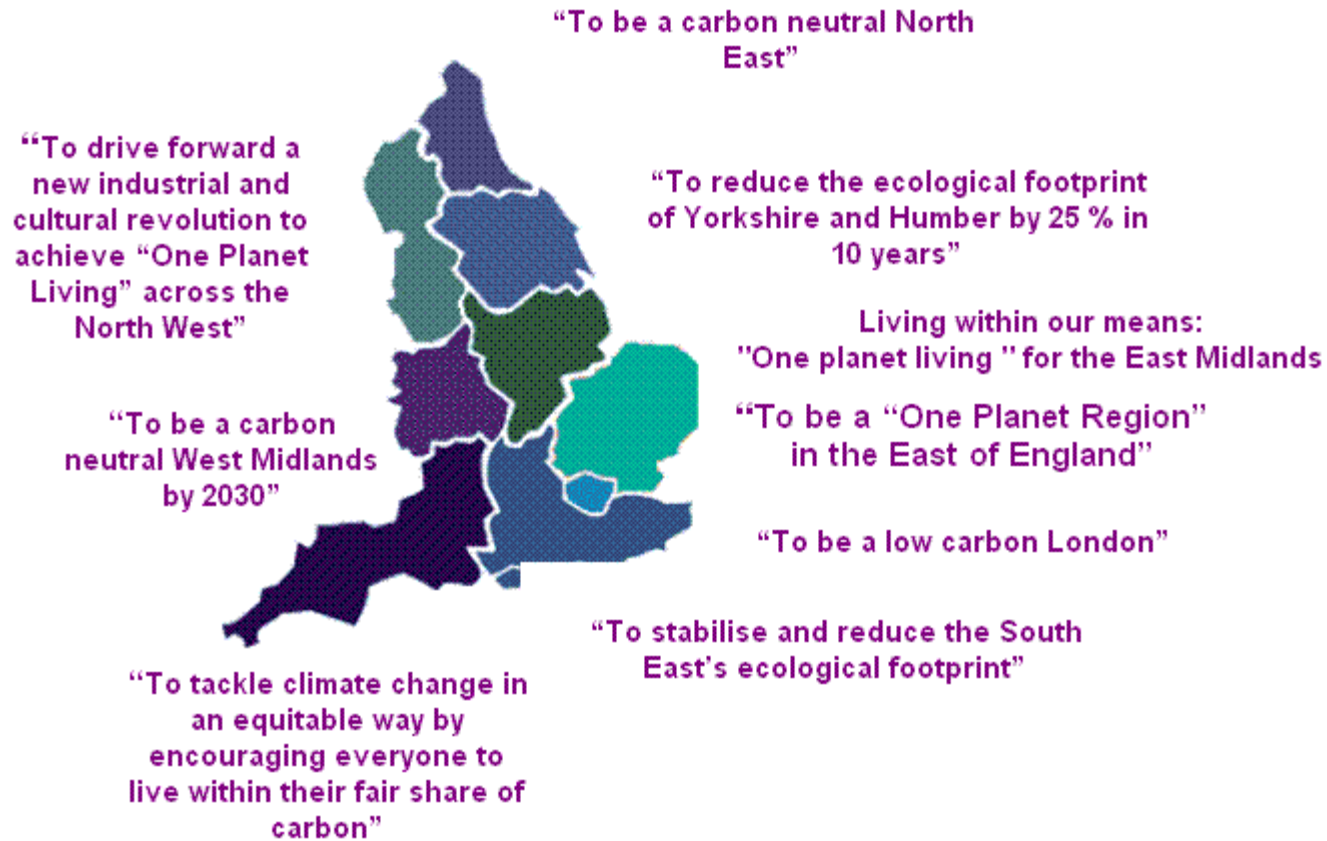
- Cabinet Office
- CLG
- BIS
- DCSF
- DCMS
- DECC
- DEFRA,
- DWP
- DfT
- Department of Health (DH)
- Home Office, and
- Ministry of Justice



The Role of the Government Offices

- Representing central Government Departments in the regions.
- Working with regional partners to ensure the joined-up delivery of the policies of our departments, all of which contribute to sustainable development, sustainable communities and climate change National Indicators.
- Regional Directors of Public Health work with the Government Office to ensure that the public health dimensions of sustainable development are promoted and considered.
- Identifying and supporting the spread of good and innovative practice, and working towards the English regions' aspirational pledges:

English Region's Aspirational Pledges



Business Planning – GO Role

- *Pledges which enable Government Offices to meet their commitment to 'lead by example' and sustain change by embedding sustainable development principles and practice across all their work and operations.*
- Promoting the link between Sustainable Schools and the achievement of NIs related to sustainable development and encourage LAs to provide effective support to schools to deliver the aims of the National Framework for Sustainable Schools.
- Supporting LAs to strategically drive school improvement through Sustainable Schools using the S3+ tool to assess their contribution to Sustainable Schools.

DCSF's Sustainable Schools Programme

- A sustainable school is one that empowers and educates young people for a sustainable future.
- Sustainable schools put care at the heart of their ethos, enabling pupils to care for themselves for each other and for the environment.
- They sit at the heart of their communities, acting as beacons of sustainability for local people.
- All schools can get started or take the next step on their journey ***and LAs can support them to achieve even more success.***



Event Agenda

- 10:15** Keynote Speech - Diana Johnson MP
- 10:25** Background to the development of the Corporate Strategy Approach - Rich Hurst GO-NE Regional SS Co-ordinator
- 10:40** Question & Answer Panel - Janice Lawson, DCSF's Head of SD Unit and NE and Y&H Regional Co-ordinators
- 11:00** Break
- 11:15** Workshop 1
- 12:00** Sustainably sourced lunch



After Lunch

- 12:45** Workshop 2
- 1:30** Workshop 3
- 2:15** Break
- 2:30** DCSF's future Sustainable Development priorities
Janice Lawson
- 2:45** Plenary and Q&A – Craig Johnson, Rich and Janice
- 3:15** Short Evaluation and Close