

Groundwork North East

Supporting Sustainable Schools

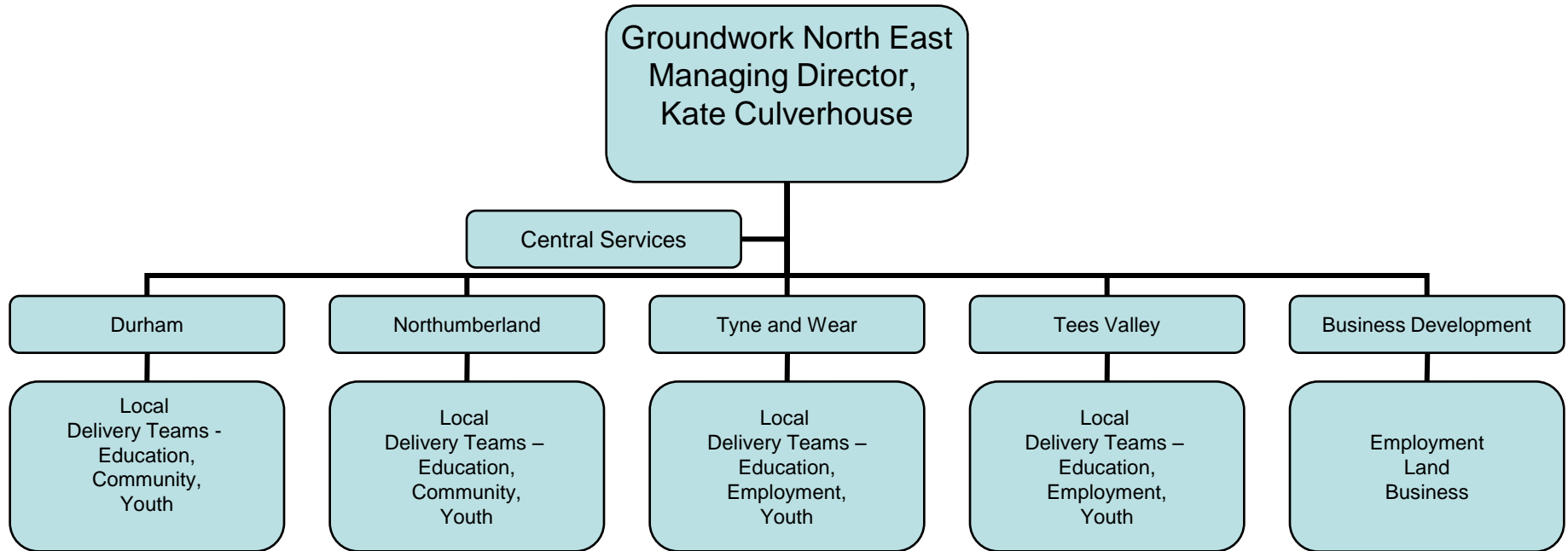


Andrea Carling

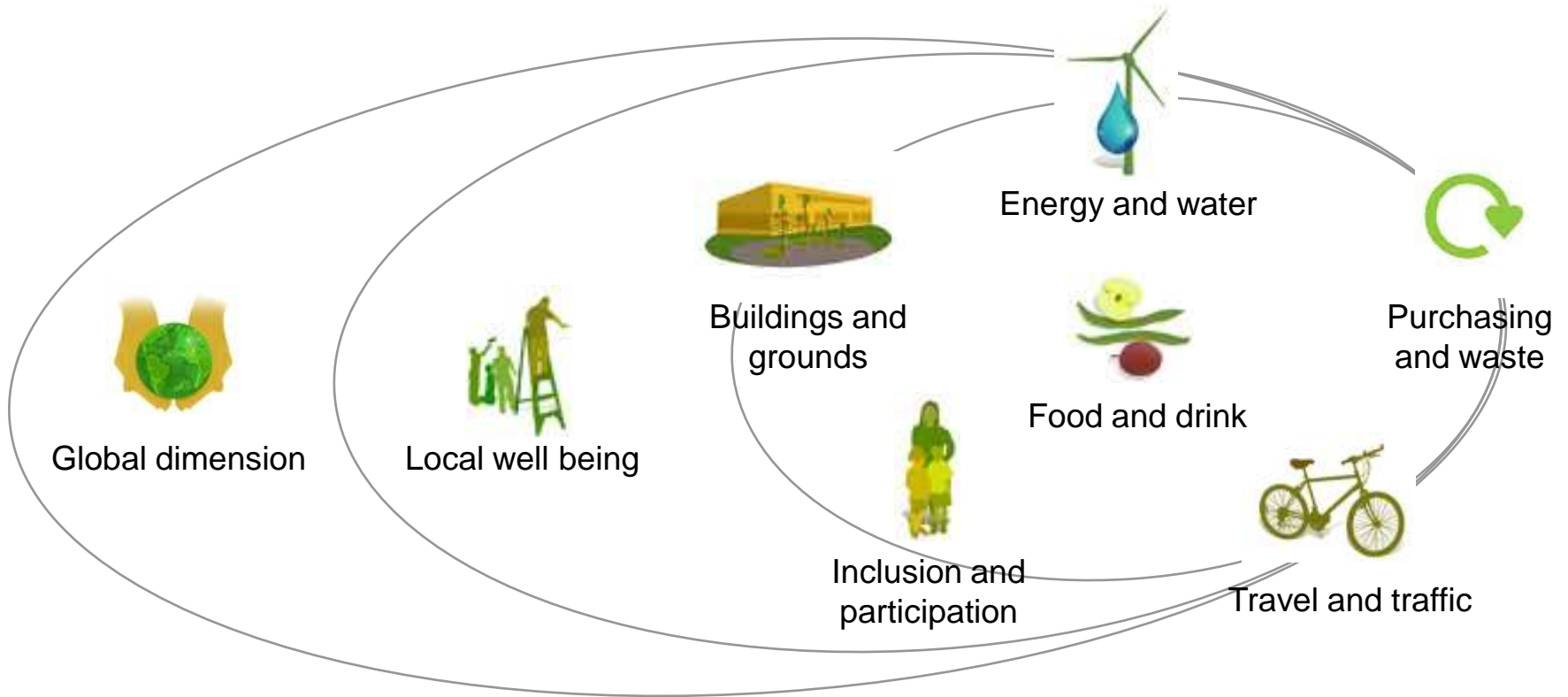
Environmental Education Officer

Tees Valley Area

New Structure



DCSF Sustainable Schools Framework



How can we support Sustainable Schools?

- Community cohesion Sustainable Schools
- Linking schools to community groups
- Links with Groundwork Communities Team
- Social justice – education
- Human rights – education
- “Wants versus needs”
- Does our ‘wellbeing’ impact on that of others in different countries?
- Exploring other’s perspectives and experiences

- Linking all the doorways to the global dimension e.g.
- Energy – climate change
- Waste – purchasing and disposal
- Travel – Fossil Fuels, materials
- Food – Food miles, Fairtrade
- Wellbeing – how meeting our needs impacts others

- Waste education programme
- Setting up recycling school
- Purchasing – cradle to grave analysis Global Dimension
- of production and waste in different
- Waste can be reduced, reused, repaired, recycled

- Global dimension - Energy use across the world
- Local action – Fuel poverty
- Oil and gas production – effects on communities across the world

water

Training and Strategic Planning

- Training delivered to
 - » Teachers and non-teaching staff
 - » Governors
 - » Parents
 - » Senior Leadership Team
- Linking Sustainable Schools activity to
 - » Self Evaluation Forms – support in completing S3
 - » School Development plans – link targets
 - » Community Cohesion
 - » Every Child Matters

- Setting up of local sustainable schools networks
- Seeking funding
- Developing local authorities' Sustainable Schools Corporate Strategy
- Training to LA staff
- Delivery of LA priorities
 - » Sustainable Communities Plan
 - » Local Area Agreements
 - » S3+ for Local Authorities

Support for partner organisations

- Partnership projects
 - » Sharing delivery
 - » Support and advice
 - » Sharing resources
 - » Seeking funding
 - » Match funding
 - » Sharing best practice
 - » Publicity